

Downtown Toms River Office Space

1,250-5,000 SF

New Construction

FOR LEASE



Features:

- 1,250 SF - 5,000 SF Divisible
- Base Rent: \$16.50 per SF NNN "rentable"
- Triple Net Rent: \$4.00 per SF (additional rent) - estimate
- Strong Daytime Population
- Minutes to the Garden State Parkway

Demographics:

	1 mile	3 miles	5 miles
Population:	8,899	74,245	182,847
Med HH Inc:	\$80,782	\$62,620	\$52,917
Daytime Pop:	3,633	31,287	53,920

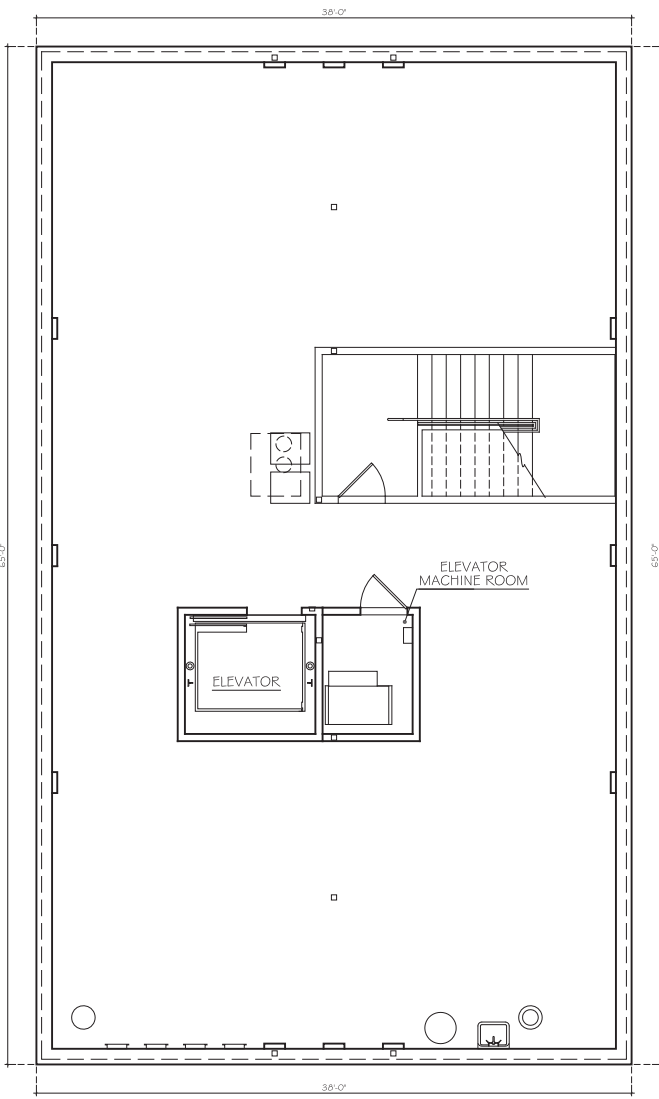
680 Hooper Ave., Bldg A, Suites 101, 102, 103, 104

680 Hooper Ave., Bldg B, Suites 201, 202, 203, 204

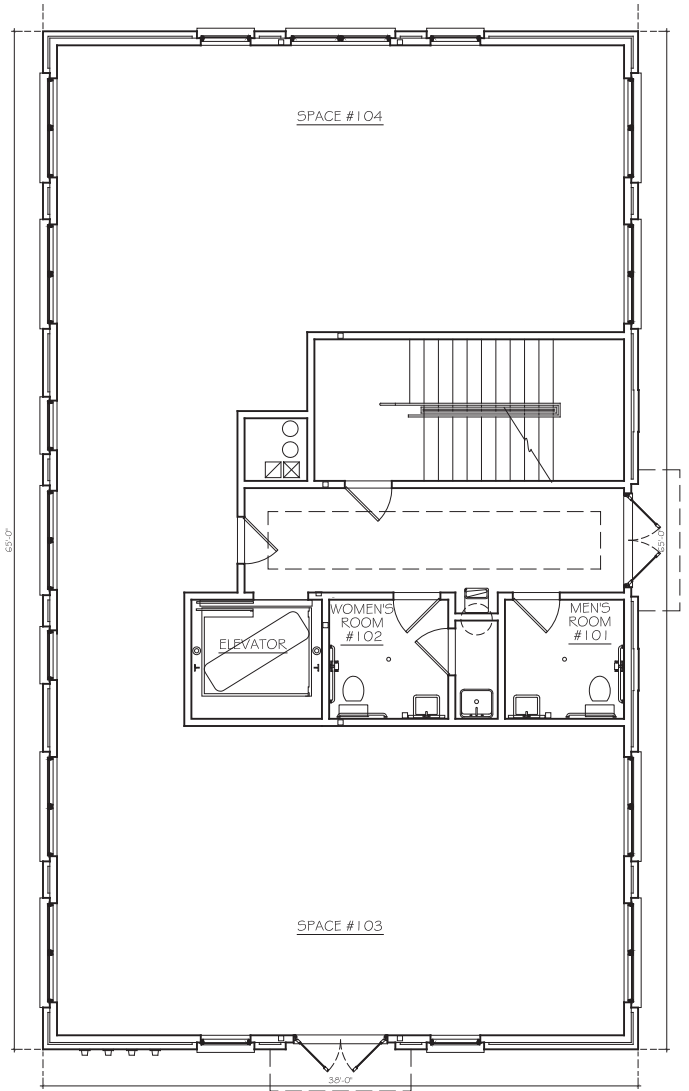
680 Hooper Ave., Bldg C, Suites 301, 302, 303, 304

Dayton Terrace • 680 Hooper Ave • Toms River, NJ 08753

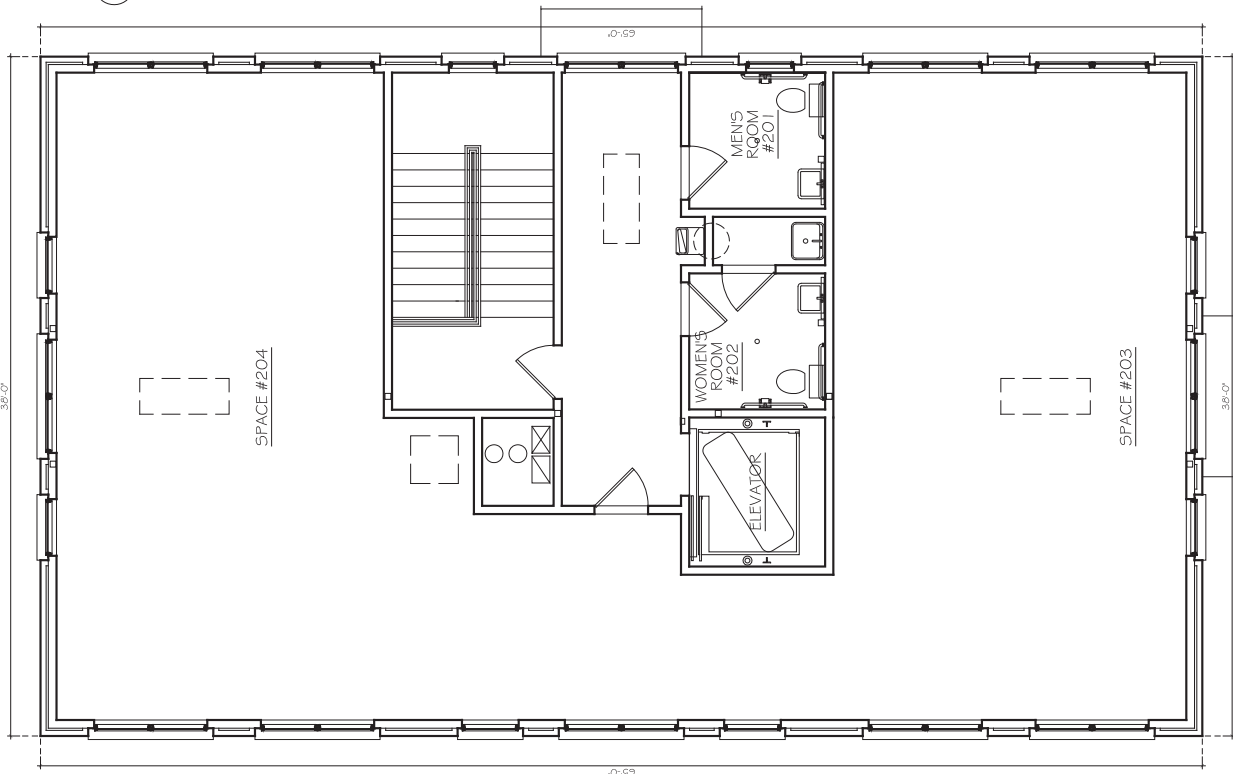




1 BASEMENT PLAN



2 FIRST FLOOR PLAN



1 SECOND FLOOR PLAN